



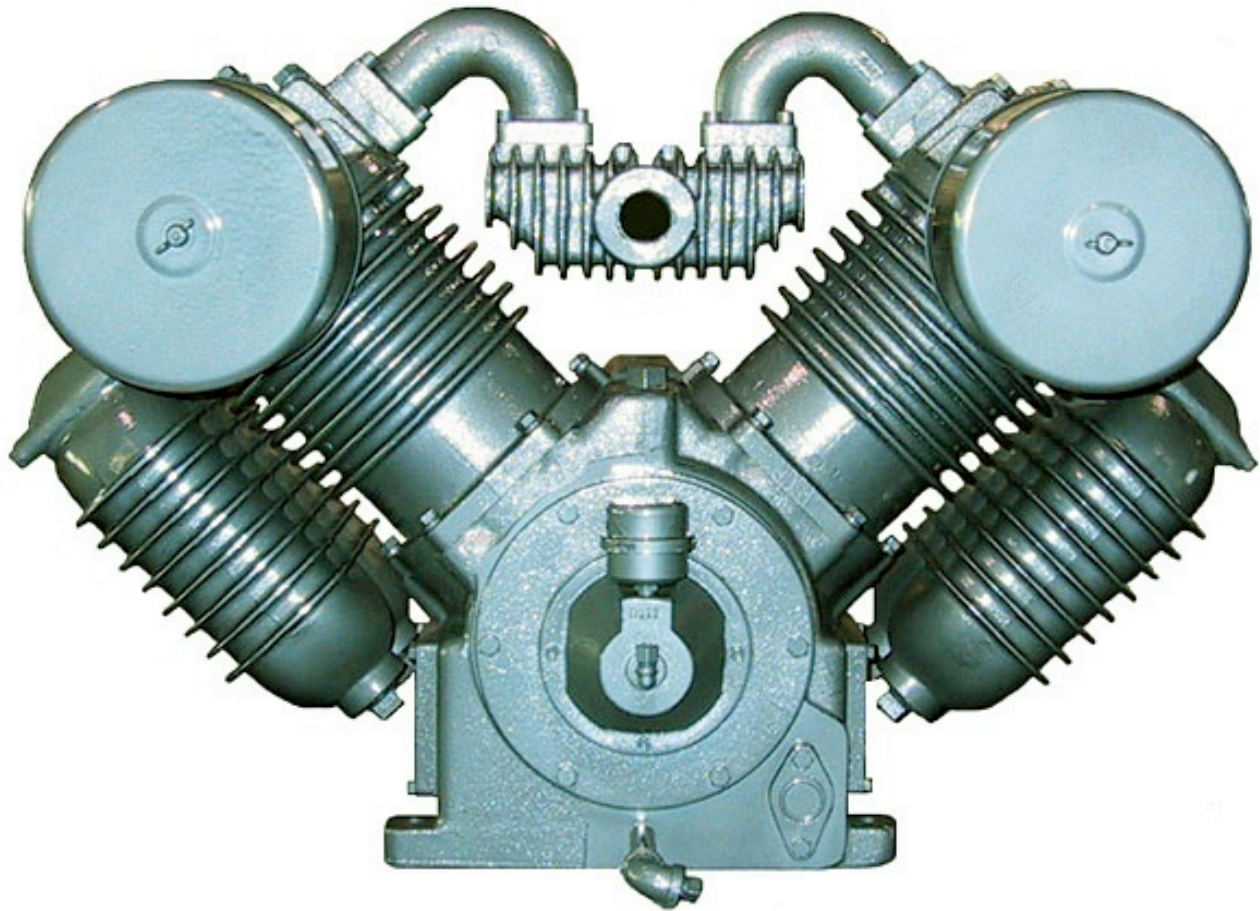
SAYLOR-BEALL

AIR COMPRESSORS

ST. JOHNS,
989-224-2371

MICHIGAN
800-248-9001

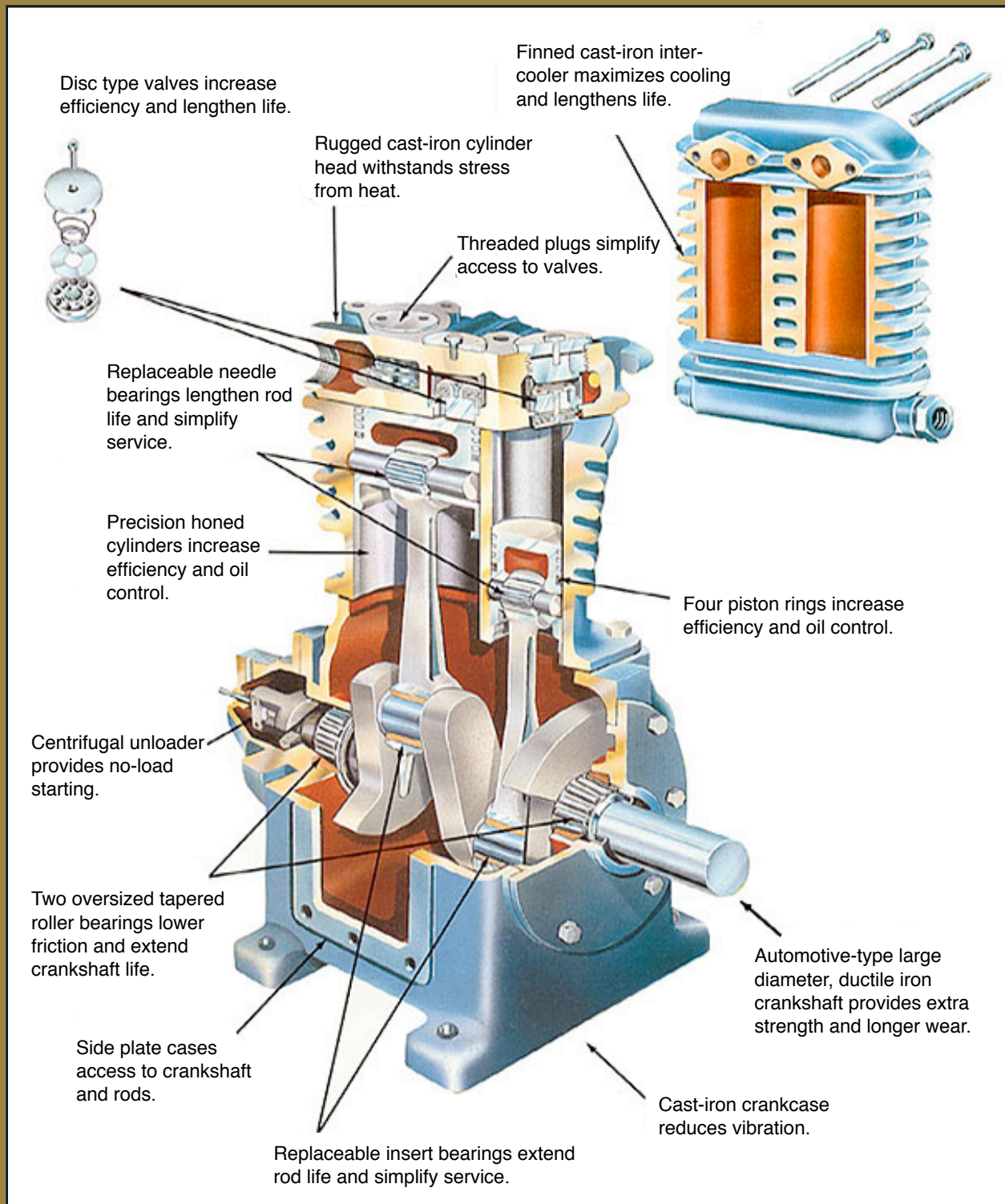
INDUSTRIAL AIR COMPRESSORS

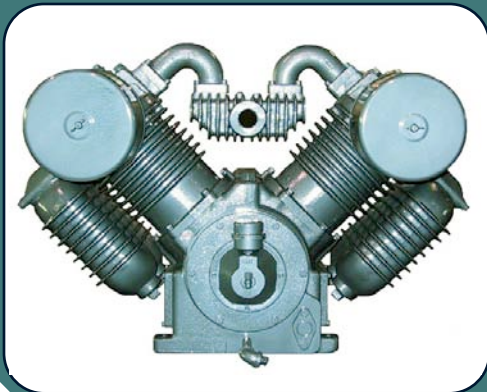
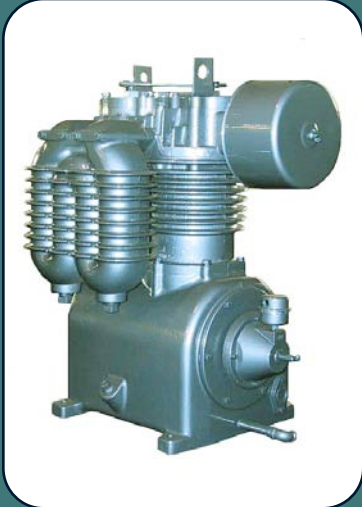
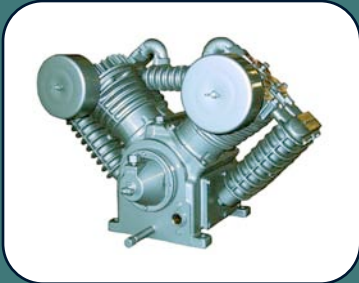


American Made Quality

Saylor-Beall Manufacturing Co. • 400 N. Kibbee St. PO Box 40 • St. Johns, MI 48879
P 800.248.9001 • F 989.224.8788 • www.saylor-beall.com

HOW IT WORKS





QUALITY SAVES MONEY

Saylor-Beall has built cast iron, reciprocating air compressors since 1915. All products are made to provide many years of efficient, trouble free service. This commitment to quality reduces the overall cost of owning and operating a Saylor-Beall air compressor.

DESIGN & ENGINEERING

Quality and durability begin with design. Saylor-Beall products use materials selected for outstanding strength and heat resistant characteristics. Our pumps are manufactured to exact dimensions with precise tolerances which result in a highly efficient air compressor design.

MACHINING

Computer controlled, state-of-the-art equipment performs machining operations with extreme accuracy. In addition, our quality control procedures continuously monitor the machining process.

ASSEMBLY

Saylor-Beall air compressors are assembled by skilled personnel who are dedicated to the precision workmanship that our customers have come to expect. After final assembly, every compressor is tested to ensure that it meets our rigid standards of product quality.

AMERICAN MADE

We take great pride in manufacturing an American made product. Our entire Saylor-Beall staff is committed to providing customers with the best air compressors available.

**Pictured Pumps from top to bottom:
D412, 705, 707, 4500 and 9000**



SAYLOR-BEALL

AIR COMPRESSORS

S T . J O H N S . M I C H I G A N
989-224-2371 800-248-9001



Saylor-Beall Manufacturing Company's plant and administrative facilities are located in St. Johns, Michigan. Saylor-Beall has been manufacturing reciprocating air compressors since 1915 and serves the following markets:

SERVICE AND SUPPORT

The Saylor-Beall name means you have bought more than just an air compressor; you have acquired the full support of an experienced air compressor company. Saylor-Beall stands behind every unit with a comprehensive warranty, as well as expert service and technical support. A network of active distributors throughout the U.S. and Canada assures convenient service and parts availability.

- Industrial
- Automotive Service Industry
- Climate Control
- Process/Instrument Control
- Agriculture
- Architectural/Engineering
- Government
- And Many Others

Our reputation for quality is built on the foundation of manufacturing experience and service. At Saylor-Beall, we take pride in our many years of manufacturing air compressors.

Put our experience and knowledge to work for you.

Pump Specifications

| Horse Power Range | Splash Lubricated Model | Pressure Lubricated Model | 100 PSI Rating* | | | 175 PSI Rating* | | | Bore Diameter (inches) | Stroke (inches) | Cylinder # | Dimensions LxWxH (inches) | Bolt Down LxW (inches) | Approx. Shipping Wt. (lbs.) |
|-------------------|-------------------------|---------------------------|-----------------|-----------|-----------|-----------------|-----------|-----------|------------------------|-----------------|------------|---------------------------|------------------------|-----------------------------|
| | | | RPM | CFM Displ | CFM Delvd | RPM | CFM Displ | CFM Delvd | | | | | | |
| ½ - ¾ | B212 | N/A | 700 | 4 | 2.6 | n/a | n/a | n/a | 2-½ | 2 | 1 | 7½x5½x11 | 5½x3 | 30 |
| 1 | D412 | N/A | 810 | 9.2 | 5.9 | n/a | n/a | n/a | 2-½ | 2 | 2 | 10½x5½x11 | 5½x6 | 44 |
| 1½ - 2 | 703 | PL-703 | 540 | 10.5 | 8.3 | 510 | 10.0 | 7.5 | 3½ & 1½ | 3½ | 2 | 19½x11½x20¼ | 7¼x9 | 207 |
| 3 - 5 | 705 | PL-705 | 845 | 23.0 | 19.3 | 845 | 23.0 | 17.3 | 4¼ & 2¼ | 3½ | 2 | 19½x11½x20¼ | 7¼x9 | 213 |
| 5 - 10 | 707 | PL-707 | 845 | 46.0 | 36.6 | 845 | 46.0 | 34.4 | 4¼ & 2¼ | 3½ | 4 | 21½x26¼x17½ | 9¼x9¾ | 311 |
| 10 - 15 | 4500 | PL-4500 | 830 | 63.7 | 52.2 | 830 | 63.7 | 51.0 | 6¼ & 3¼ | 4¼ | 2 | 26½x17¼x27 | 12¼x12¼ | 462 |
| 15 - 30 | 9000 | PL-9000 | 830 | 127.4 | 104.5 | 830 | 127.4 | 101.1 | 6¼ & 3¼ | 4¼ | 4 | 26½x17¼x27 | 12¼x12¼ | 678 |

SAYLOR-BEALL Manufacturing Company warrants its compressors and parts when properly installed, lubricated and maintained as recommended and in accordance with good industry practice to be free from defects in material and workmanship under normal use and service. The responsibility of the Company under this warranty is limited to repair or replacement at the Company's factory, any compressor or part thereof, which shall, within one year after date of shipment to the original purchaser, be returned to the Company and which, upon examination, shall be found defective to the satisfaction of the Company. This warranty shall not apply to compressors or parts which have been subjected to misapplication, misuse, negligence or accident, to compressors or parts which have been repaired or tampered with outside the Company's factory when in the judgement of the Company, it appears that the reliability or stability of the compressor or part has been effected. Ordinary maintenance, such as adjustment and cleaning of equipment or components is the responsibility of the owner. All transportation and shipping charges shall be paid by purchaser. This warranty does not apply to electric motors or gasoline engines. These are covered by the Original Manufacturer's Warranty and should be returned by the purchaser to their authorized station for service. This warranty is expressly in lieu of all other warranties (except of title) expressed or implied and of any other obligations or liability on the part of the Company. There are no warranties of merchantability or of fitness for a particular purpose.