

Used Oil Evacuation Systems

308719G

ENG

Model 224873, Series A

Wall-mount 716 diaphragm pump evacuation system, used-oil receiver must be ordered separately

Model 222090, Series A

Wall-mount 1040 diaphragm pump evacuation system, used-oil receiver must be ordered separately

Model 24E166, Series A

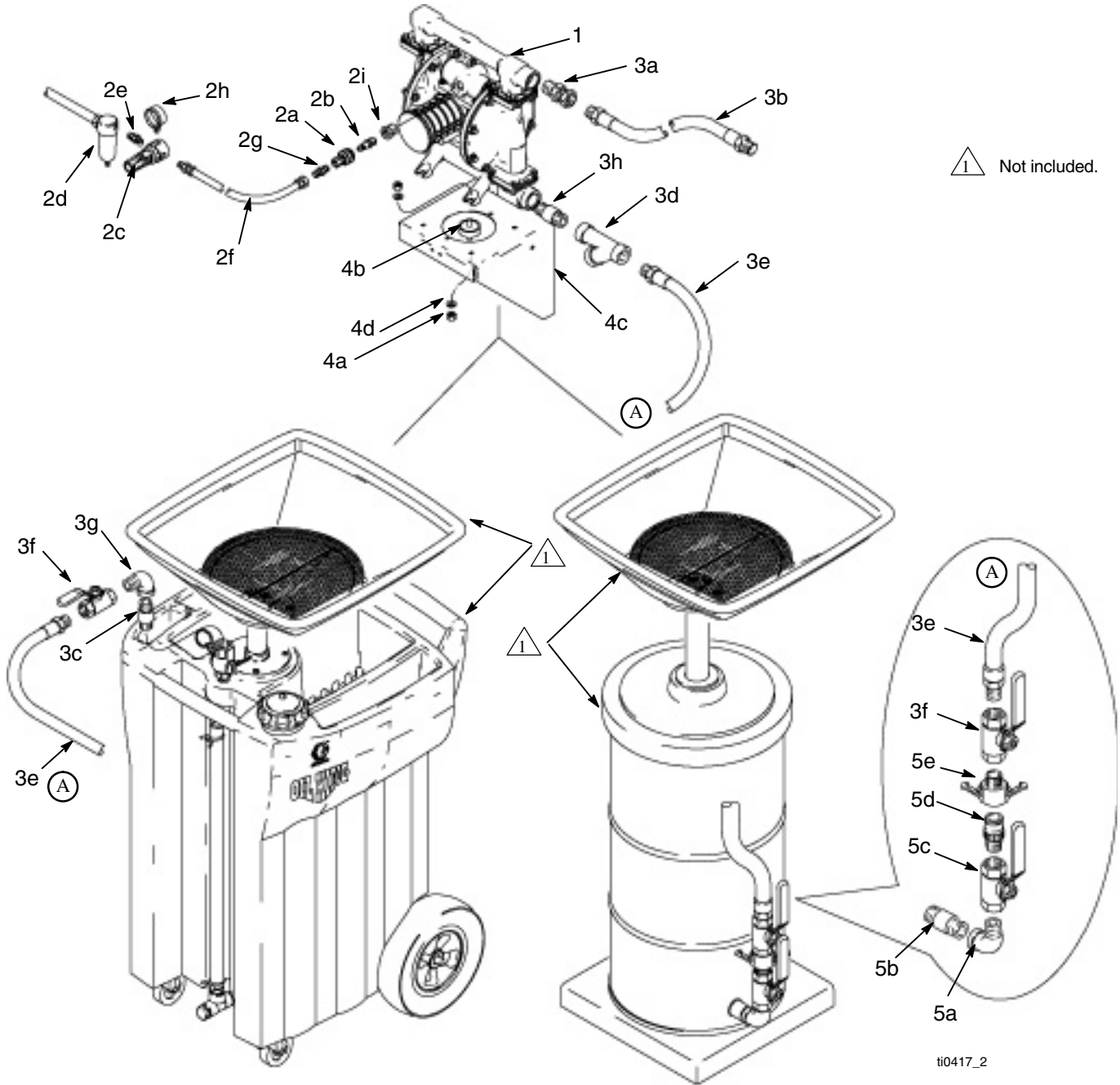
Wall-mount 1050 diaphragm pump evacuation system, used-oil receiver must be ordered separately

PROVEN QUALITY. LEADING TECHNOLOGY.

Parts

Model 24E166, Series A

Wall-mount 1050 diaphragm pump system without used-oil receiver (includes items 1 through 5)



Parts

Model 24E166, Series A

Wall-mount 1050 diaphragm pump system without used-oil receiver (includes items 1 through 5)

Ref No.	Part No.	Description	Qty.	Ref No.	Part No.	Description	Qty.
1	647016	1050, 1-inch (25.4 mm) diaphragm pump (See manual 313597)	1	3d	101078	. Y-STRAINER, female; 3/4 npt	1
2	240684	KIT, installation, air (includes items 2a through 2j)		3e	111010	. HOSE, fluid, coupled; 10 ft (3.1 m)	1
2a	114558	. COUPLER, female, air line; 1/4-in (6.4 mm)	1	3f	109077	. VALVE, ball; 3/4 npt	1
2b	169970	. FITTING, male, air line; 1/4-in (6.4 mm)	1	3g	100549	. ELBOW, street; 3/4 npt(f) x 3/4 npt(m)	1
2c	104815	. REGULATOR, air; 1/8 npt	1	3h	158555	. NIPPLE; 1 npt x 3/4 npt	1
2d	110146	. FILTER, air; 1/4 npt	1	4	24C637	KIT, accessory, wall bracket (includes 4a through 4d)	1
2e	151519	. NIPPLE; 1/4 npt x 1/8 npt	1	4a	111040	. NUT, lock	8
2f	183595	. HOSE, air; 30-in (762 mm)	1	4b	16D786	. DAMPER, cylindrical	4
2g	162453	. NIPPLE; 1/4 npt x 1/4 npsm	1	4c	16D787	. BRACKET, wall mount	1
2h	104655	. GAUGE, air pressure; 1/8 npt	1	4d	556521	. WASHER	8
2j	100206	. BUSHING; 1/2 npt x 1/4 npt	1	5	240832	KIT, adapter, drum-style; (includes items 5a through 5e)	1
3	240685	KIT, installation, fluid (includes items 3a through 3h)		5a	100549	. ELBOW, street; 3/4 npt(f) x 3/4 npt(m)	1
3a	202965	. UNION, swivel; 1 npt(m) x 3/4 npsm(f)	1	5b	100627	. NIPPLE, short; 3/4 npt	1
3b	241694	. HOSE, fluid, coupled; 4-ft (1.2 m)	1	5c	109077	. VALVE, ball; 3/4 npt	1
3c	100627	. NIPPLE, short; 3/4 npt	1	5d	113902	. COUPLER, camlock, male; 3/4	1
				5e	113907	. COUPLER, camlock, female; 3/4	1

Oil King,[™] Coolant King[™] and Oil Ace[™]

Fluid Reclaim Packages and Accessories

Oil King and Coolant King

- Large 25 gallon capacity with sight gauge
- Convenient tool trays and filter areas
- Large offset collection pan with screen
- Oversized tires to get over hose and rough floors
- Color specific receiver for easy identification

Typical Applications

- Used fluid receiver
- Automotive dealerships
- Heavy-duty dealerships
- Fast lube centers
- Fleet service facilities
- Service shops

Typical Fluids Handled

- Used oil—Oil King
- Used antifreeze—Coolant King

Ordering Information

Oil King Oil Receiver	
238866	25 gal (95 l) Polyethylene tank with used-filter tray, tool holders and sight gauge. Includes all hardware for topside evacuation or bottom drain*. Instruction manual 308667
Coolant King Anti-Freeze Receiver	
248632	25 gal (95 l) Polyethylene tank with used-filter tray, tool holders and sight gauge. Includes all hardware for topside evacuation or bottom drain*

* Must use 224873 for topside evacuation. Must ship via truck.



248632



238866

Oil Ace

- Easy to drain using shop air pressure
- Large 24 gallon capacity
- Large offset collection pan with screen

Typical Applications

- Pressurized used oil receiver
- Automotive dealerships
- Heavy-duty dealerships
- Service shops
- Fast lube centers
- Fleet service facilities

Typical Fluids Handled

- Used oil

Ordering Information

Oil Ace	
119577	24 gal (90 l) Steel-tank Pressurized Oil Drain



119577

Fluid Reclaim Packages and Accessories